

Horseshoe Cemetery

Pembroke, Virginia

(file updated 6/1/2011)



Mary Burk Snidow Headstone

Picture of Mary Burk Snidow's headstone taken in May 2004. Some of it is difficult to read:

In memory of
Mary Snidow
wife of
_____ Christian Snidow
and daughter of
Tho_____ Clara Burk
(Thomas and Clara Burk)
_____ departed this life
_____ y 3rd 1__5

(some records indicate she died May 5th, 1825 but the headstone sure looks like it says "3rd")

63 years 1 months _____

(see next page)



Horseshoe Cemetery continued:

Don and Nancy Johnston, along with Jim Yarbrough and others, went to Horseshoe Cemetery in 2007 & 2008 to work on stabilizing the tombstones in the cemetery. In the process, **another tombstone for Mary Burk Snidow was found!** It appears to be her original stone. The Tombstone reads: Mary Snidow, Born 23 Dec 1761, Died 3 May 1825." It was about a foot deep on top of Adeline Chapman Snidow's grave. (So she **did** die on May 3rd)

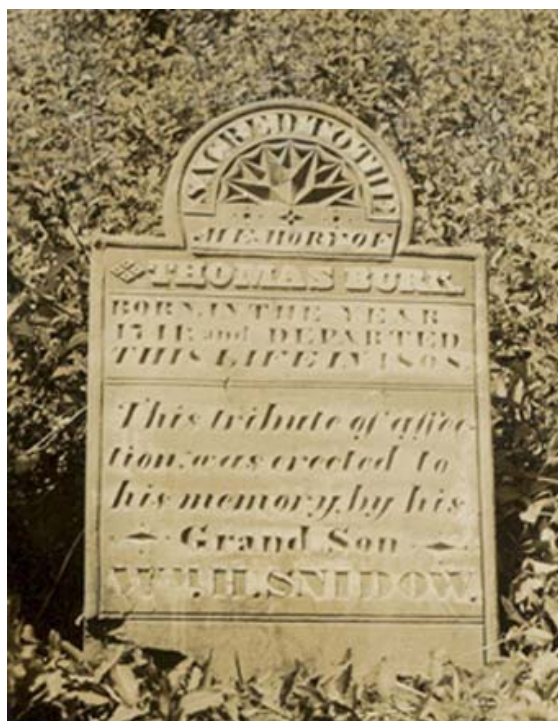


Thomas Burk's new gravestone dedicated in 1999



Thomas Burk and Clara Burk original headstones:

Thanks to John & Jean Snidow of Hardy, VA for sharing these photographs of the Burks headstones and Col. Christian Snidow's original headstone. Judging by the old truck in the picture at the bottom of this page, these pictures were probably taken in the early 1900s?? They're quite clear, considering.....



*Sacred To The Memory of Thomas Burk
Born in the year 1711 and departed this life 1808
This tribute of affection was erected to his memory
by his grandson Wm. H. Snidow*



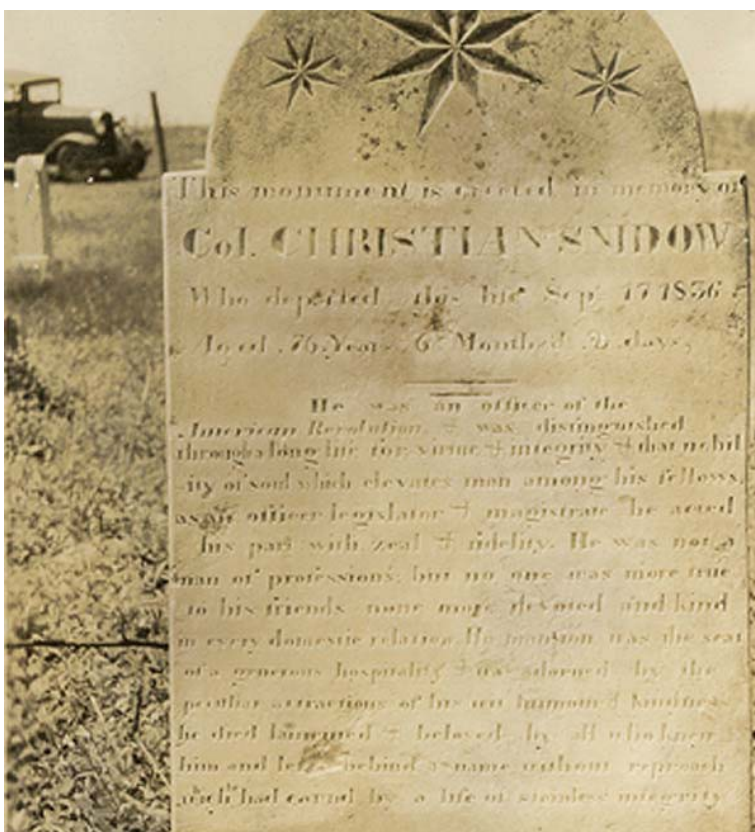
*Sacred to the memory of Clara Burk
Who departed this life in the year 1811
This tribute of affection was erected to her
memory by her grandson
Wm. H. Snidow*

Col. Christian Snidow's original headstone -

broken by a falling tree several years ago and replaced at a ceremony in August 2003 (see next page). Here is a close-up photograph of the original headstone....

"This Monument is erected in Memory of Col. Christian Snidow Who departed this life September 17, 1836 Age 76 Years, 6 Months & 2 Days He was an officer of the American Revolution & was distinguished through a long life for virtue & integrity & that nobility of soul which elevates man among his fellows as an officer, legislator & magistrate. He acted his part with zeal & fidelity. He was not a man of profession but no one was more true to his friends, none more devoted and kind in every domestic relation. His mansion was the seat of a generous hospitality & was by the peculiar attraction of his wit, humour & kindness. He died lamented and beloved by all who knew him & left behind a name without reproach which he had earned by a life of stainless integrity."

(See more pictures of Col. Christian's stone on the next page)



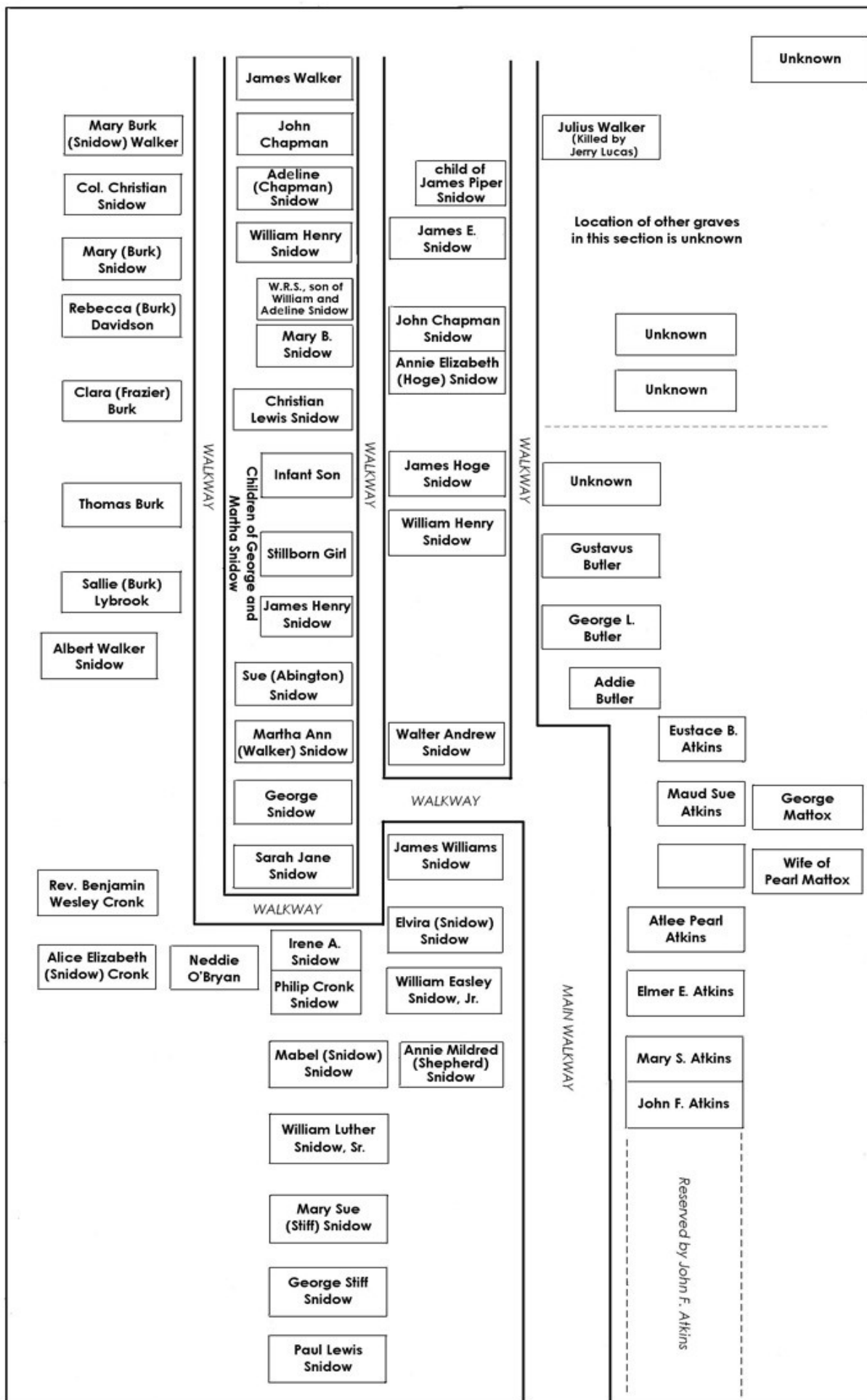


Pictured above right - Col. Christian's new headstone and Thomas Snidow Lloyd (a 5th great-grandson of Col. Christian) unveiling it at the ceremony in 1999 at Horseshoe Cemetery.

See our Lineage web page for family, military and other information on Col. Christian and his siblings.



Who's Buried at Horseshoe Cemetery in Pembroke, Virginia



HORSESHOE CEMETERY ~ Alphabetized list of names of those interred
James Price Farm, Pembroke, VA overlooking the old Horseshoe Farm and New River

4 unknown graves	Snidow, George
Atkins, Atlee Pearl	Snidow, George Stiff
Atkins, Elmer E.	Snidow, Infant Son (child of Geo. & Martha Snidow)
Atkins, Eustace B.	Snidow, Irene A.
Atkins, John F.	Snidow, James E.
Atkins, Mary S.	Snidow, James Henry Snidow (child of Geo. & Martha Snidow)
Atkins, Maud Sue	Snidow, James Hoge
Burk, Clara Frazier	Snidow, James Williams
Burk, Thomas	Snidow, John Chapman
Butler, Addie	Snidow, Mabel Snidow
Butler, George L.	Snidow, Martha Ann Walker
Butler, Gustavus	Snidow, Mary B.
Chapman, John	Snidow, Mary Burk
Cronk, Alice Elizabeth Snidow	Snidow, Mary Sue Stiff
Cronk, Rev. Benjamin Wesley	Snidow, Paul Lewis
Davidson, Rebecca Burk	Snidow, Philip Cronk
Lybrook, Sallie Burk	Snidow, Sarah Jane
Mattox, George	Snidow, Stillborn Girl (child of Geo. & Martha Snidow)
Mattox, wife of Pearl Mattox	Snidow, Sue Abington
O'Bryan, Neddie	Snidow, W.R.S. (son of Wm. & Adeline Snidow)
Snidow, Adeline Chapman	Snidow, Walter Andrew
Snidow, Albert Walker	Snidow, William Henry
Snidow, Annie Elizabeth Hoge	Snidow, William Henry
Snidow, Annie Mildred Shepherd	Snidow Jr., William Easley.
Snidow, child of James Piper Snidow	Snidow Sr., William Luther
Snidow, Christian Lewis	Walker, James
Snidow, Col. Christian	Walker, Julius (killed by Jerry Lucas)
Snidow, Elvira Snidow	Walker, Mary Burk Snidow

Source: Don and Nancy Johnston, with the help of William Snidow, James Yarbrough, and Larry Snidow, in 2007 and 2008 put many hours into Horseshoe Cemetery. They dug up headstones and set them on a bed of marble chips to stabilize the headstones. During the last week of May 2008, they began to piece together the broken stones and to glue them. The equipment to do this work was hauled all the way from Maryland! They did a scaled diagram showing the location of each grave (see previous page).